



## Letter from the Presidents

Dear Creatives,

Is it just us, or did this winter seem more challenging? Many of us just hunkered down in our studio spaces to hibernate productively. Happily, the Spring/Summer season has burst upon us with an abundance of opportunities to show and share.

*BOUNDARIES*, the impressive member exhibition created for us by juror, Natasha Karpinskaia at Westchester Community College's large gallery in the Academic Arts Building just opened. For those of you who may not have made the opening, we urge you to experience this elegant installation before it closes on May 31.



Dyan Rosenberg and Arle' Sklar Weinstein

Our Exhibition Committee has been busily organizing our next members' showcases, with outgoing Chair, Mary Tooley Parker's support assisting incoming Exhibition Chair, Sharon Cavagnolo. HUGH thanks to Mary for always going above and beyond, and much appreciation to Sharon for picking up the ball and running!

Our next Juried Members Show is planned for the Schoolhouse Galleries with the theme, *PLAY'S THE THING!* juried by Peter Reginato. The show will open with a reception on September 7th and run through October 5th for pickup of work.

Our *OPEN MEMBERS* exhibition at the Katonah Library will feature a poetry reading event led by KMA's Writer-in-Residence, Pam Hart on November 23. The show runs from November 9 to November 30.

Our grateful thanks to KMAA Board officers - outgoing Treasurer Michele Gage and our incoming Treasurer Nancy Scherl; ongoing Secretary Carole Paley with Tatiana Ferraro; and Board assignments for Membership, Janet McDermott with Melissa Feinberg. Newsletter production includes our stalwarts Sally Aldrich with Janet McDermott and Julie Rosenberg, our newest Board member, who also serves as our social media maven. Barbara Korman is our august Program Chair. Our kudos also to our delicious and talented Hospitality Chair June Gumbel, working with Marjie Kern and Marilyn Miller who refresh us at each event.

Our Board is an active and vital energy serving all its artist members and a support base for our home, the Katonah Museum. If you are interested in becoming an important voice on the KMAA Board of Advisors, let us know.

Arle' and Dyan

## Special Events



Mitchell Visosky  
click image to visit website

### **ARTISTS VISIT ARTISTS**

Barbara Korman confirms the upcoming ARTISTS VISIT ARTISTS tour of **Mitchell Visosky's** studio in Port Chester on Sunday November 3rd from 2:00 - 4:00pm. An opportunity not to miss, Mitchell will show and discuss his printing and painting techniques.

Further details will be provided via email closer to the event date.

---

## Upcoming Exhibits

*PLAY'S THE THING!* KMAA's next Juried Members Show will open at the Schoolhouse Galleries with a reception on September 7th and run through October 5th.

Our *OPEN MEMBERS* exhibition at the Katonah Library has a poetic feature and runs from November 9th through 23rd.

Stay posted for updates on KMAA's upcoming exhibitions scheduled for this fall.



The Schoolhouse  
Theater & Arts Center

click an image to visit website



The Katonah Village Library

---

## KMAA on Social Media!



click images to visit our sites!



Social media is a great way to get your artwork out there. It is used for networking, sales and all types of promotion. Do you have an upcoming event or exhibition? Do you have any art-in-the-works that you'd like to share? If so, please send an email to [info@artists-kmaa.com](mailto:info@artists-kmaa.com) with jpeg images. Include a description of your work, along with title, medium, dimensions and any hash tags you'd like added to the post. Follow us and see other member's work, upcoming shows/events, etc. at:

<https://www.facebook.com/Katonah-Museum-Artists-association-957427601004069/> Instagram: [@katonahmuseumartistsassoc](https://www.instagram.com/katonahmuseumartistsassoc)

Walking on Manhattan's Upper east Side, I feel almost ecstatic as I approach Nancy Scherl's apartment. It is beautiful after an early Spring cold spell, and as I enter her apartment, I notice a group of modern primitive paintings on her living room walls.

As I walk in closer I am struck by an enormous body painted in vivid color by Sergio Velasquez, a gift bought by Nancy for her long-time boyfriend, Rich, an anesthesiologist. Looking around the room, a grouping of small Buddhist monks from Myanmar catches my eye, as well as a wooden duck from Indonesia. These artworks every-where reflect Nancy and Rich's travels, giving hints of their lives. After a tour of the apartment we sit down at her dining room table covered in the center with a kuba cloth from Africa, where Nancy accompanied Rich on a medical mission for



Nancy A. Scherl

Healing the Children. Based on her experiences there in 2015, Nancy created a photographic essay, *Midwives of Kasaganti*. Graduating from the University of Wisconsin in 1977, Nancy explored photography with the Journalism and Art Departments. Art teacher Cavalier Ketchum taught the distinction between *making* pictures as opposed to *taking* pictures. Nancy says, "I see my work as staged fantasies constructed to mimic or replicate life." As an example, she opens a portfolio of recent work entitled, *Dining Alone*. The first photograph is an attractive man seated by himself in an elegant restaurant with a meal in front of him. The next shows an older woman eating alone also in a different setting. There are thirty different stories of middle-aged or older people in different settings eating. These are staged in that Nancy has hired the seated people for the shoot and made previous arrangements with the restaurants.

Her other approach to photography includes constructed sets. These are fantasies mimicking reality, which she calls her scientifically impossible worlds. They are artificially constructed. Some look like viruses staged to look real but not real. Except for a few years in the early 1980s doing free-lance work in San Francisco, Nancy has worked and lived in New York since the end of the 1970s.

An independent photographer today, she began her career assisting commercial photographers, working for large home designer companies. At the turn of the century, she went back to school - earning an MFA in from the School of Visual Arts in Photography, Video, and Related Media Arts. This past April she went for a portfolio review in Portland, Oregon where she enhanced her connections with fellow photographers, gallery owners and publishers. Nancy is optimistic about her future, considering a book among other projects. You go, girl!

Sally Aldrich

A solo show of work by **Marcy B. Freedman** was presented at the Ottinger Gallery, Croton Free Library, in March and April. This exhibition, *RETHINKING MY PAST WORK FROM A FEMINIST PERSPECTIVE*, featured a written analysis of each work on view. In conjunction with the exhibition, Freedman presented an interactive performance entitled Pick one. Tell me about it. Get a surprise. She continued her performance series at the BeanRunner Café, Peekskill, *TELL ME, IS THIS YOUR COUNTRY?*. She will debut her new collaborative *GENEFREE* video Ketchup at the Garrison Art Center and perform Politics or Art in her Peekskill studio. (To register & for further information contact Marcy at mbf@bestweb.net.)



Marcy B. Freedman

**Wendy Shalen** continues to teach *DRAWING & PAINTING FROM LIFE*, and *PORTFOLIO DEVELOPMENT* Tuesday -Thursday mornings in July at The Art Students League of New York as well as her afternoon workshops. Wendy's landscape workshop, *IMPRESSIONIST LANDSCAPE IN CENTRAL PARK AND THE MET* takes place July 8 -11 and July 15-18. She will host *SELF-PORTRAITURE AND THE METROPOLITAN MUSEUM*, with an afternoon drawing self-portraits by master artists in the Drawing Print Study Room at the Metropolitan Museum. (To register or for information contact Wendy at wshalen@gmail.com).



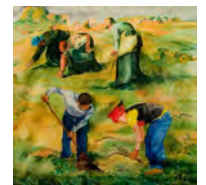
Bernard Kessler,  
*CONSTITUTION MARSH*,  
photograph

In his on-going project **Bernard Kessler** has been donating his work for over eighteen years to nonprofit organizations. Recently his three-foot panoramic photograph *Constitution Marsh* was auctioned at *MY JUSTICE, NYC*, for over \$2,000.



Sherry Camhy,  
*OLIVIA*,  
sterling and Austrian silver on prepared wooden board

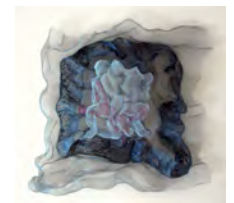
**Sherry Camhy's** silverpoint images were recently featured at the Didier Aaron Gallery, NYC, in *Artist Magazine* (August-September 2019 Issue), and in the book *Silverpoint/Metalpoint Drawing: A Complete Guide to the Medium*. Sherry is on the faculty of NYU Tisch School of the Arts, The School of Visual Arts, and the Art Students League of New York. This summer she will be giving workshops in Italy (Rome, Florence, Siena, Perugia). At the King Street Studio, Chappaqua, starting September, and her studio, which will be open June 1-2, 12:00 - 5:00 pm for the *WEST CHELSEA OPEN STUDIO EVENT*.



Berenice Pliskin,  
*MODERN GLEANERS*,  
painting on silk

Three silk paintings by **Berenice Pliskin** will be on view from June through September in the conference room of the International Labor Organization, a United Nations agency. These works are part of her series *LATINO DAY LABORER*.

**Lea Weinberg's** solo installation entitled *CONTEMPORARY MEMORIES*, is on exhibit through June at Temple Beth-El of Great Neck, NY. Her wire mesh relief *SURROUNDED* was part of NAWA's group exhibit *VISUAL BIOGRAPHY: WOMEN'S NARRATIVE* at Grand Central Library, NYPL. Lea was chosen by the National Women's Caucus for Art as their Featured Artist for her wire mesh relief *CONNECTED*. Her piece *TOGETHER* received the Best in Exhibit Award at the Mooney Gallery, College of New Rochelle.



Lea Weinberg,  
*SURROUNDED*,  
wire mesh relief

The projection piece entitled *USA 2017- SOUTH DAKOTA* by **Gina Randazzo** will be on exhibition in the *KMAA BOUNDARIES* show at the Westchester Community College Gallery, Valhalla.



Gina Randazzo,  
image from *USA 2017 - SOUTH DAKOTA*,  
projection piece

**Connie Freid** exhibited her paintings in *WE ARE FAMILY* at the Blue Door Art Center. Her piece *WOMANTIDE* was shown at the Riverfront Art Gallery in Yonkers.

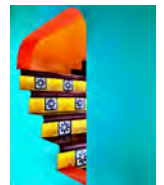
**Mariya Rivera's** piece *HYDRANGEA FANDANGO* won First Prize in Oils in the Art Society of Old Greenwich members' *SPRING GARDEN SHOW* at the Greenwich Botanical Center, Cos Cob. Mariya is a member of ASOG.



Mariya Rivera,  
*HYDRANGEA FANDANGO*

The *IT'S ABOUT COLOR* art exhibition at the Wilton Library featured the work by **Sharon Cavagnolo** through May 31. She has three paintings in the *KMAA WCC* show in Valhalla.

**Deborah Loeb Bohren** was recognized at the *12th ANNUAL INTERNATIONAL COLOR AWARDS*, a global competition honoring excellence in color photography, receiving an Honorable Mention for her image *EUCLIDEAN GEOMETRY* in the Professional Abstract category and a second Honorable Mention for *STAIRWAY TO?* in the Professional Architecture category. In addition, four of her images were selected as nominees in the Abstract category for her pieces *HOMAGE TO ROTHKO*, *CHROMA*, *CHAIRS* and *RED*.



Deborah Loeb Bohren,  
*STAIRWAY TO ?*,  
photograph

**Leslie Connito's** photograph *THE ROAD TO POUGHKEEPSIE* was awarded first place in the annual Art Show Bedford 2019. The jurors were Michael Gitlitz, Executive Director of the Katonah Museum of Art, and Peter MacGill, President, Pace MacGill Gallery, NYC. She was chosen for a solo show for the *RIDGEFIELD PLAYHOUSE ART AND WINE SERIES*, opening June 15.

The Harrison Public Library hosted a solo exhibition of the work by **Hilda Green Demsky** through May 31 featuring twenty of her new abstract paintings.



Hilda Demsky,  
*DISCOVERY*

The Ridgefield Guild of Artists' *9th ANNUAL JURIED MEMBER SHOW* will include the work by **Heidi Lewis Coleman**. The juror, Isabella Garrucho, is the Founder and President of Isabella Garrucho Fine Art and Art Services Int., Greenwich, CT. The show runs through June 23.

**Pratibha Garewal** is exhibiting her paintings in *ARTS ON THE AVENUE*, Greenwich, CT.

Offerings Gallery in Katonah is hosting a solo show featuring work by **Tracy Burtz**. **Barbara Masterson** was awarded an individual artist grant from the Arts Mid-Hudson in Poughkeepsie, NY. The awards ceremony was held at Buttermilk Falls in Milton, NY.



Heidi Lewis Coleman,  
*CURRENTS*,  
acrylic on canvas

Silvermine Arts Center's *PAPER 2019* exhibition will include work by **Ivy Dachman**.

The Bedford Playhouse and CB Gallery, Katonah, will feature new works by Carol Bouyoucos in the exhibition entitled *LOVE IN THE GARDEN*.

Chris Perry's *FREED FORMATS: THE BOOK RECONSIDERED* exhibition has moved to its second of four venues and is now on view at the Putnam Arts Council and the Mahopac Public Library. The exhibition received acclaim at the Ridgefield Guild of Artists and the Mark Twain Library last month.

The *BIENNIAL MINI PRINT EXHIBIT* at the Center for Contemporary Printmaking, Norwalk CT will show two works by **Sheila M. Fane**. Her work exhibited in the *FLOWER SHOW* at the Featherstone Arts Center on Martha's Vineyard in May. She will have work in the invitational *BLOOMING ART SHOW* at the Marthas Vineyard Garden Club in late June. Her work was also accepted into the *SMALL WORKS SHOW* at the Mamaroneck Artists Guild. She won Honorable Mention in the *ANNUAL MEMBERS EXHIBIT* at the Center for Contemporary Printmaking last January.

The *ARTS ON THE LAKE* program will feature the work of **Toni Flynn** for the month of June in the exhibition *IN PLAIN SIGHT*.

**Marcia Brandwein** has been selected as guest artist at the Boothbay Regional Art Foundation, Boothbay, Maine for the month of August. Marcia will also be showing at the Stable Gallery in Damariscotta, Maine all season.

Connecticut abstract artist **Kat Evans** was selected to create a site-specific painting for the *KIPS BAY DECORATOR SHOWHOUSE 2019, NYC*, which features Evans' piece entitled *THE ROYAL MUSE*.

**Mary Ellis** will have a 15-year retrospective exhibition at The Bethany Arts Community in Ossining, opening on June 8.

The woodcut *THREE GLADIOLO REPRISE*, printed on burlap, by **Patrick Redmond** is included in the *78th ANNUAL MATA (Milwaukee Area Teachers of Art) MEMBERSHIP EXHIBITION* at the Milwaukee Public Library Central, Milwaukee, Wisconsin.

**Michele Gage's** piece entitled *WET FEET* will be shown in *THE EDGE EFFECT: INTERNATIONAL OPEN JURIED EXHIBITION* at The Katonah Museum of Art June 30 - September 22. Congratulations Michele! Michele also has ten works on view at Catherine H in Katonah.

**Sally Aldrich** was invited to exhibit eight paintings in *IT'S ALL ABOUT COLOR* at the Wilton Library. She is also exhibiting at the New Pond Farm, Redding, CT, from June 1 - 9.



Pratibha Garewal,  
watercolor



Toni Flynn,  
*A BUTTER OF DANDELIONS*



Marcia Brandwein



Katherine  
Evans,  
*THE ROYAL  
MUSE*



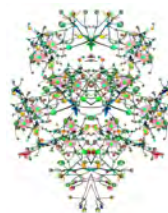
Mary Ellis



Patrick Redmond,  
*THREE GLADIOLO REPRISE*,  
print on burlap



Michele Gage,  
*WET FEET*,  
watercolor



Carol Bouyoucos,  
*BERRY BAROQUE*,  
archival digital  
photograph



Ivy Dachman,  
*UNTITLED*, Flashe  
and ink on Yupo

**HAPPY SUMMER KMAA MEMBERS!!  
CONGRATULATIONS ON ANOTHER GREAT  
YEAR OF CREATING ART!  
SEE YOU IN THE FALL AT OUR NEXT EXCITING EXHIBITS!**

Some shots from the KMAA Member Luncheon at the Katonah Museum of Art, June 3, 2019.

