



**Katonah Museum of Art**  
134 Jay Street  
Katonah, NY 10356  
(914) 232-9555 x 2968

**Press Contact:**  
Sarah Marshall  
(914)232-9555 x 2975  
smarshall@katonahmuseum.org  
www.katonahmuseum.org

**PRESS RELEASE**

For Immediate Release: January 10, 2019

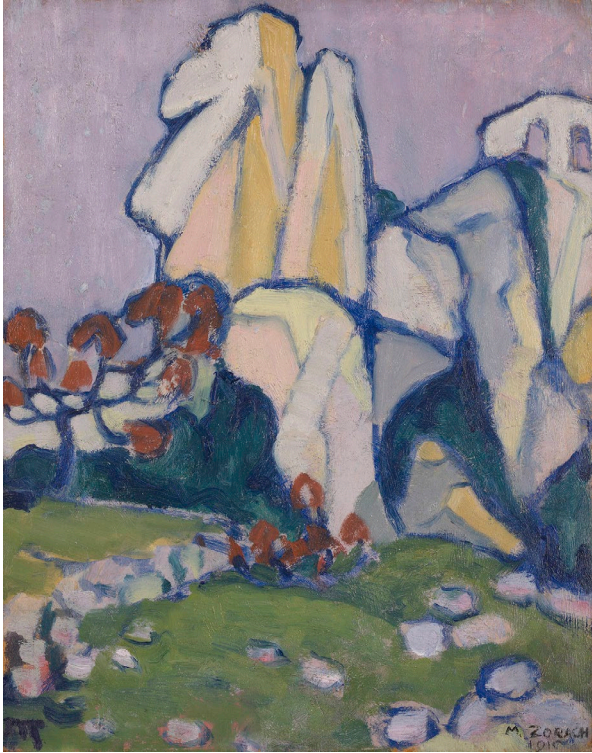
***LandEscape: New Visions of the Landscape  
from the Early 20th and 21st Centuries***  
March 17 - June 16, 2019



Marsden Hartley, *Dogtown*, 1934, oil on hardboard, 16 x 27 7/8 inches, The Collection of the Frederick R. Weisman Art Museum at the University of Minnesota, Minneapolis. Bequest of Hudson D. Walker from the Lone and Hudson D. Walker Collection, 1978.21.329

**Katonah, NY, January 10, 2019** — The Katonah Museum of Art (KMA) is pleased to present *LandEscape: New Visions of the Landscape from the Early 20th and 21st Centuries* on view from March 17 - June 16, 2019. The show juxtaposes the work of early 20<sup>th</sup> century American modernist painters who exhibited their innovative works at the groundbreaking 1913 Armory Show with contemporary artists from the 21<sup>st</sup> century who have rediscovered and reinvigorated the genre. Curated by Olga Dekalo, this show is comprised of approximately 30 works and reveals how a diverse range of artists broke from the established landscape painting traditions of their predecessors to create a new visual language that profoundly changed the way the genre was perceived. Artists such as Marsden Hartley, John Marin, Alfred Maurer, Helen Torr and Marguerite Zorach all engaged with what was considered to be an unexceptional genre. They removed it from its realist roots and radically altered the form and style of landscape painting. One hundred years later the same innovative impulse has once again emerged in the works of contemporary artists Alex Katz, Jo Baer, April Gornik, Lois Dodd, Judy Pfaff, Ryan Nord Kitchen and Shara Hughes who have again reinterpreted the landscape. The two eras share a central theme, which is a desire to reflect an artistic vision that deliberately takes place outside of urban centers and embraces the experience of small towns and the rural countryside, a notion that reflects a necessary economic and environmental escape by artists from the city.

The historic works in the show such as Alfred Maurer's vivid and expressionistic *Landscape (Autumn)*, 1909 and Marguerite Zorach's *Moonlight*, 1910, confirm the influence of European modernists. Of particular note is Marsden Hartley's vibrant *Dogtown* c.1934 on loan from the Frederick R. Weisman Art Museum, Minneapolis, MN. Dogtown, in Gloucester, MA was a colonial settlement that had been abandoned by 1830 and was regarded in Hartley's day as the province of vagabonds, witches and feral dogs. Hartley described it as a cross between Easter Island and Stonehenge and transformed the barren scenery into a dramatic, expressionist landscape. In 21<sup>st</sup> Century, April Gornik's *Sun and Storm*, 2006 captures the vast, empty environment and the power of nature. At the same time, Shara Hughes's *The Not Dark Dark Spots*, 2017 echoes the vivid palette and style of her 20<sup>th</sup> modernist predecessors.



Marguerite Thompson Zorach, *Moonlight*, 1910, oil on panel, 16 x 12 ¾ inches  
Heckscher Museum of Art, Huntington, NY. Gift of the Baker/Pisano Collection



Shara Hughes, *The Not Dark Dark Spots*, 2017, oil and dye on canvas, 68 x 60 inches, Private Collection  
© Shara Hughes

This exhibition benefits from the generous loans of several institutions including SFMOMA, The Whitney Museum of American Art, The Frederick R. Weisman Art Museum, The Heckscher Museum as well as major private collections such as the Myron Kunin Collection.

###

#### **ABOUT THE KATONAH MUSEUM OF ART:**

The Katonah Museum of Art (KMA) promotes the understanding and enjoyment of the visual arts for diverse audiences. The museum presents exhibitions that explore ideas about art, culture and society – past and present – through innovative exhibition and education programs. The KMA hosts lectures, workshops, trips and concerts, solidifying it as a space that both celebrates and amplifies the power of creative thinking.

**Exhibition Details:** March 17 – June 16, 2019

*1ST LOOK:* Saturday, March 16 | Member Preview & Public Opening: Sunday, March 17

Hours: Tuesday - Saturday, 10:00 AM – 5:00 PM, Sunday 12:00 – 5:00 PM.

Address: 134 Jay Street, Katonah, NY 10536.

Admission: \$10 adults, \$5 seniors and students. Members and children under the age of 12 enter free.

[katonahmuseum.org](http://katonahmuseum.org)